

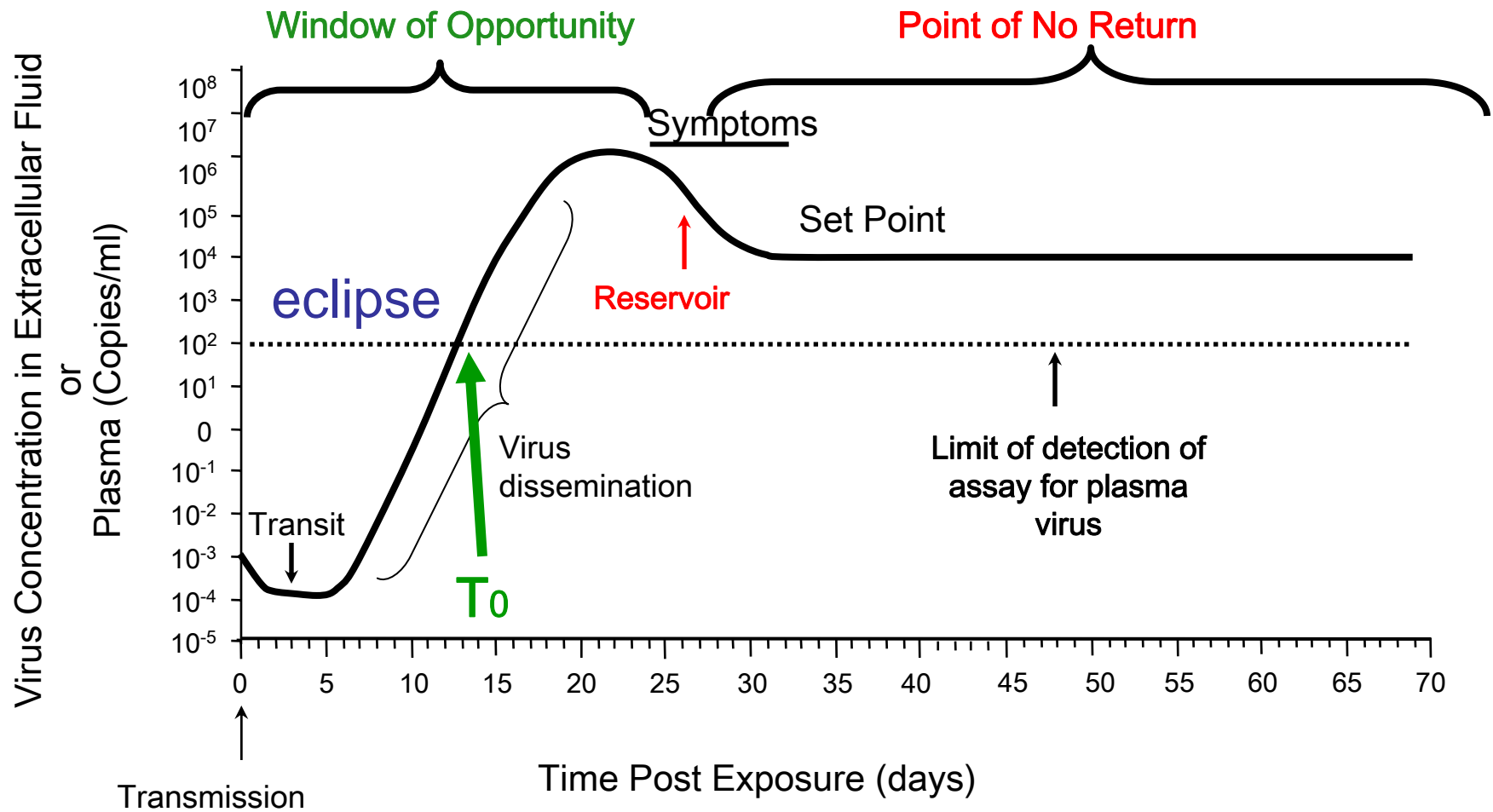
Lack of highly poly-functional epitope-specific CD8+ memory T cell responses during spontaneous control of viremia: CHAVI 001 study

AIDS Vaccine 2008
Cape Town, 13-16 October

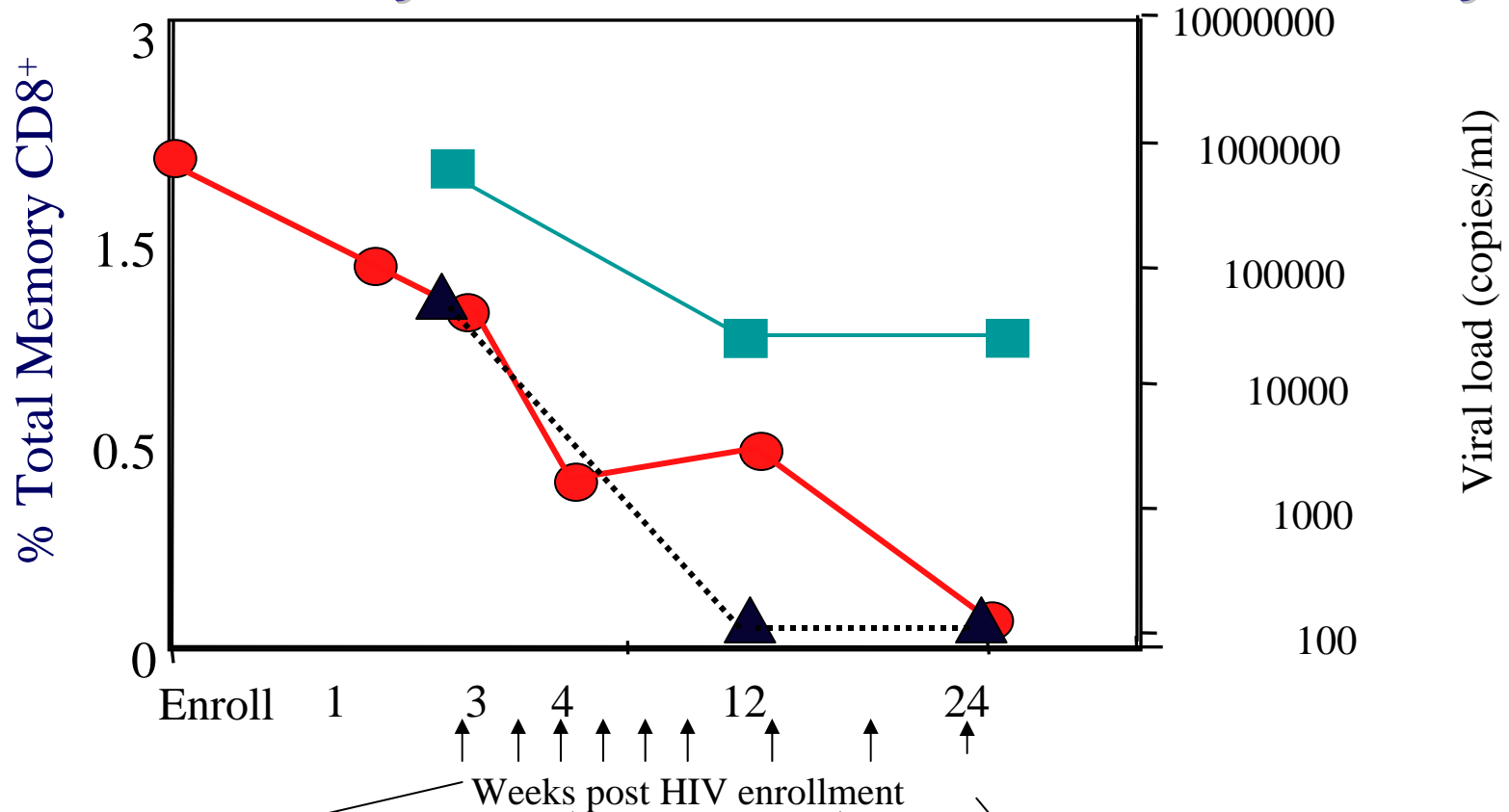
Guido Ferrari
Duke University Medical Center



Acute HIV-1 Infection



CHAVI 001 Study: Course of Viremia and T Cell Study



Screening: Seronegative/NAT positive
Full length HIV sequence

6 months: Full T cell epitope map on autologous peptides (ELISpot)

Peptides based on autologous sequence

Intervening full length sequences

● Virus load

■ p24 specific CD8 T cells

▲ Nef specific CD8 T cells

Sequential analysis of Wdel responses to mapped and mutating epitopes: ELISpot and ICS
 IAGSEIQQEIQIGWMTSN
 WYHTQGYFPDWQNYTPG



CHAVI 001 Study: Virus Load and Time Points

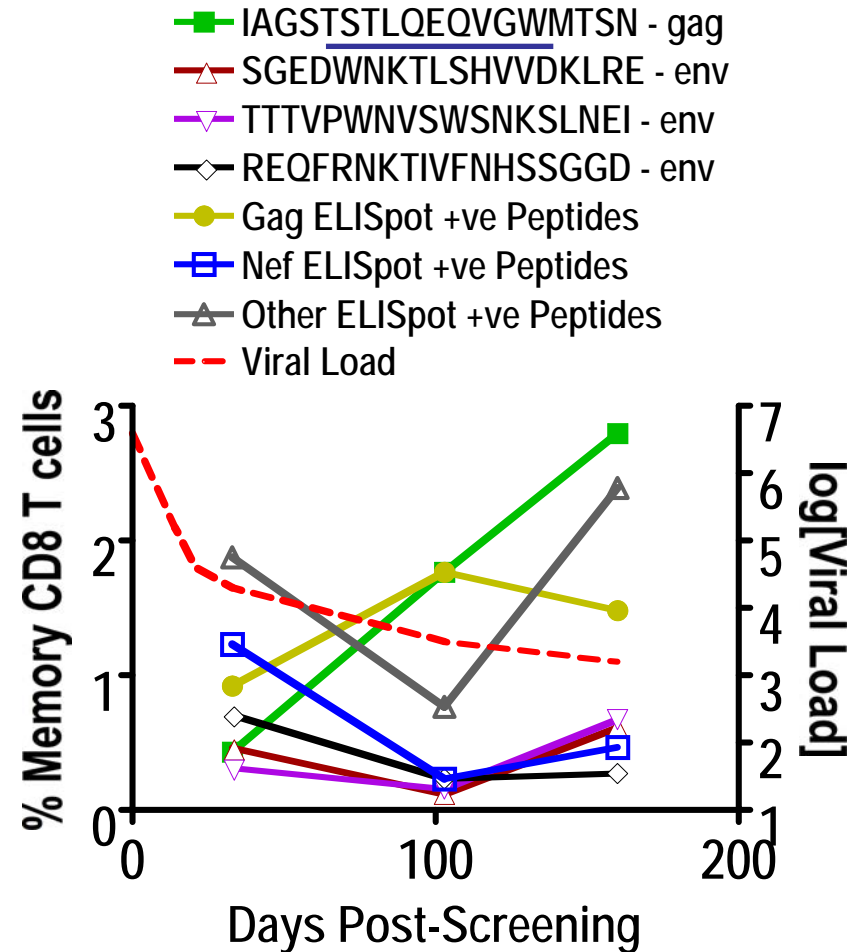
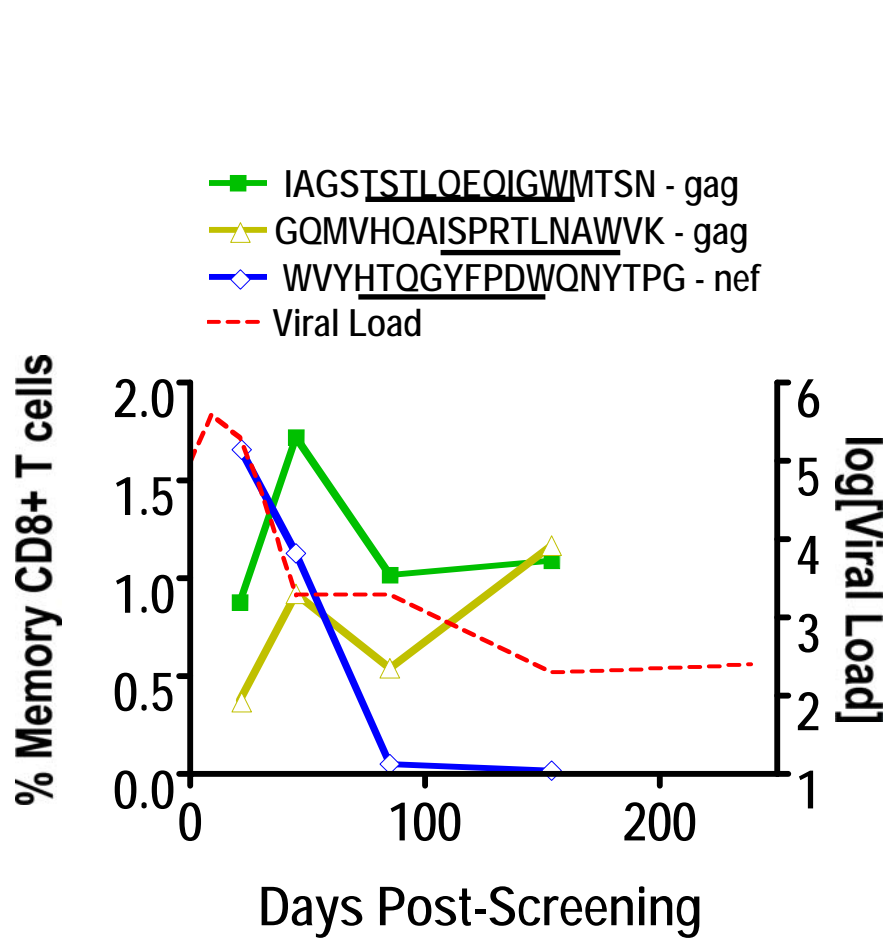
Summary

Patient #	HAART	Enrollment	Virus Load (copies/ml) at Week ICS assay				
			1	3	4	12	24
700-01-00-40	No	298,026	MV	MV	89,156	17,587	29,453
700-01-00-77	No	144,145	37,560	17,907	MV	3,073	1,680
700-01-00-58	No	394,649	MV	56,739	1,908	2,168	205
701-07-00-27	Yes	194,744	3,687	1,804	1,836	400	50
701-01-00-43	Yes	5,532	MV	1,250	380	50	50
701-01-00-55	Yes	31,513,812	22,826,172	37,783	31,699	1,670	50
700-01-00-81	Yes	3,746	104	50	50	50	50
700-01-01-06	Yes	>750,000	14,538,865	33,884	26,468	50	107

CHAVI 001 Study: Week 24 Epitope Mapping Results

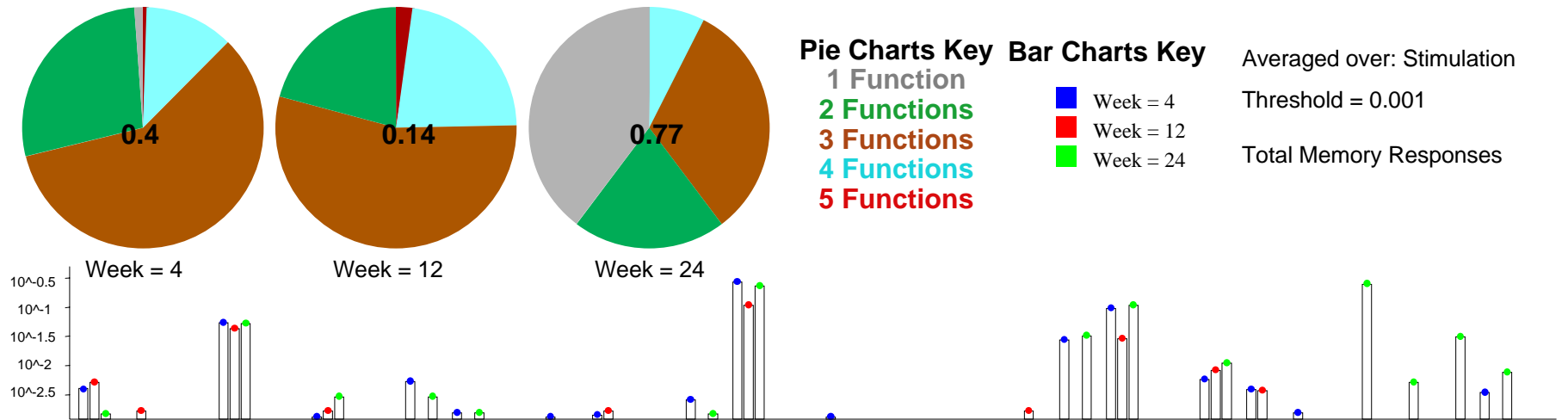
Patient #	Stimulation	HIV Antigen	Sequence	Peptide#	SFU/10 ⁶ cells
700-01-00-40 HLA type A*3101,*0201;B*4402,*4001;C*0302	Individual	RT	ORQIRSI SERILSTYLER	03899	208
	Individual	env	LFSYHRLRDL LLI VTRIV	00620	183
	Individual	env	IEVQRACRAILHIPRRR	00629	103
	Individual	gag	KELYPLASLRSLFGNDPS	00442	93
	Individual	pol	VKTIHTDNGSNFTSTTVK	00515	88
	Individual	gag	IVKCFNCGKEGHIARNCR	00049	73
	Individual	vif	DCFSESAIRKAILGRIVS	03819	68
	700-01-00-77 HLA type A*0205;B*5301,*5701;C*0401	Individual	gag	IAGSTSTLQEQVGMWTSN	003386
Individual		env	SGEDWNKTL SHVVDK LRE	003304	313
Individual		env	TTTVPWNVSWSNKSLNEI	003335	243
Gag7 Pool		gag	HIVWASRELERFAVNPSL	003377	130
Gag7 Pool		gag	LGLNKIVRMYSPTSILDI	000415	53
Gag7 Pool		gag	LERFAVNPSLLETSEGCR	003378	83
Gag7 Pool		gag	FYKTLRAEQASQEVKNWVM	000419	83
Gag7 Pool		gag	PFRDYVDRFYKTLRAEQA	000418	52
Gag7 Pool		gag	GOMVHQAI SPRTLNAWVK	000018	113
Gag7 Pool		gag	GKKQYK LKHIVWASRELE	001988	112
Nef3 Pool		nef	QVPVRPMTYKAALDLSHF	003411	62
Nef3 Pool		nef	FDSRLAQHVAREIHPEF	003423	40
Nef3 Pool		nef	YKAALDLSHFLKEKGGLE	001563	60
Pool ELISPOT+		pol	KISTESIVWGRTPKFRLL	003464	120
Pool ELISPOT+		env	RAVLNIPTRIROGLERALL	003359	92
Pool ELISPOT+		env	GCSGRVIC TTTVPWNVSW	003334	82
Pool ELISPOT+		env	VAEGTDRVIEELQRAWRA	003357	60
Pool ELISPOT+		RT	DEDLLKTVRLIKRLYQSN	003487	88
Pool ELISPOT+		pol	KQLTEAVQKISTESIVIW	003463	52
Pool ELISPOT+		pol	LKKIIGQVRDQAEHLKTA	000171	40
Pool ELISPOT+		vpu	RLLDRIIDRAEDSGNESE	003514	40
700-01-00-58 HLA type A*0101,*2301;B*1402,*5701;C*0802	Individual	gag	IAGSTSTLQEQIGWMTSN	003646	170
	Individual	gag	GOMVHQAI SPRTLNAWVK	000018	75
	Individual	nef	WVYHTQGYFPDQWQNYTPG	000308	65
	Individual	gag	GSKKYK LKHIVWASRELE	003635	35
	Individual	gag	PPESFRFGEEKTAPVQK	003653	15
701-01-00-27 HLA type A*6802,*0201;B*5301,*5101;Cw*0402/01	Individual	nef	YFPDQWQNYT	000790	332
	Individual	pol	VPLDKDFRKYTAFTIPSI	000467	90
	Individual	pol	WEAWWTEYWOATWIPEWE	000490	60
	Individual	nef	WVYHTQGYFDQWQNYTPG	000308	55
	Individual	pol	KLPIQKETWEAWWTEYWQ	000489	32
701-01-00-43	Individual	No epitopes mapped at week 24			
HLA type A*2301,*3301;B*0702,*0701; C*0702,*1601					
701-01-00-55 HLA type A*6801,*0201;B*3501,*0801; C*0401,*0701	Individual	gag	EIYKRWII	000812	245
	Individual	env	RIROGLERALL	000631	70
	Individual	pol	KAGYVTDGRGRQKVVS LTD	000495	43
	Individual	gag	NNPPIPVGEIYKRWII LG	000413	20
700-01-00-81	Individual	gag	GKKKYK LKHIVWASRELE	000390	10
HLA type A*1101,*2401;B*3501,*3502;C*0401					
700-01-01-06 HLA type A*1101,*2401;B*3501,*3502;C*0401	Individual	vpr	GPOREPYNEWTLELLEEL	000367	183
	Individual	vif	WRKKWYSTQVCPC LADQL	000692	110
	Individual	pol	KILEPFRKQNPDI V IYQY	000469	87
	Individual	nef	QVPLRMTYX	000736	40

Kinetics of Epitope Recognition in Controllers CH58 and CH77

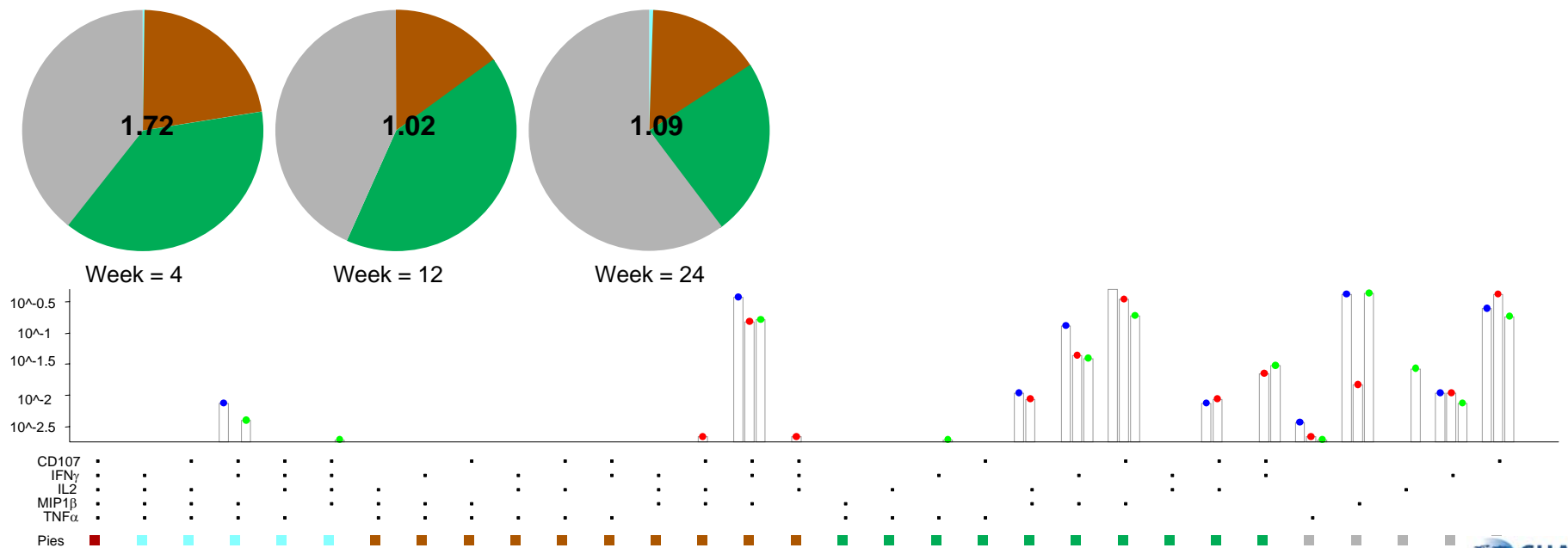


Frequency and Functionality of Immunodominant Responses

CH40 (w/o HAART & Non-Controller) Epi 3899 RT: QRQIRSISERILSTYLE (208 SFC/10⁶ Wk 24)

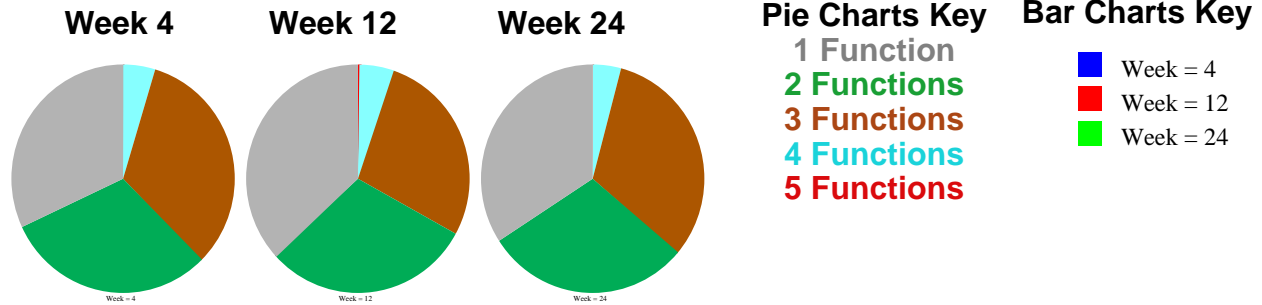


CH58(w/o HAART & Controller) Epi 3646 Gag: IAGSTSTLQEIQGWMTSN (170 SFC/10⁶ Wk 24)

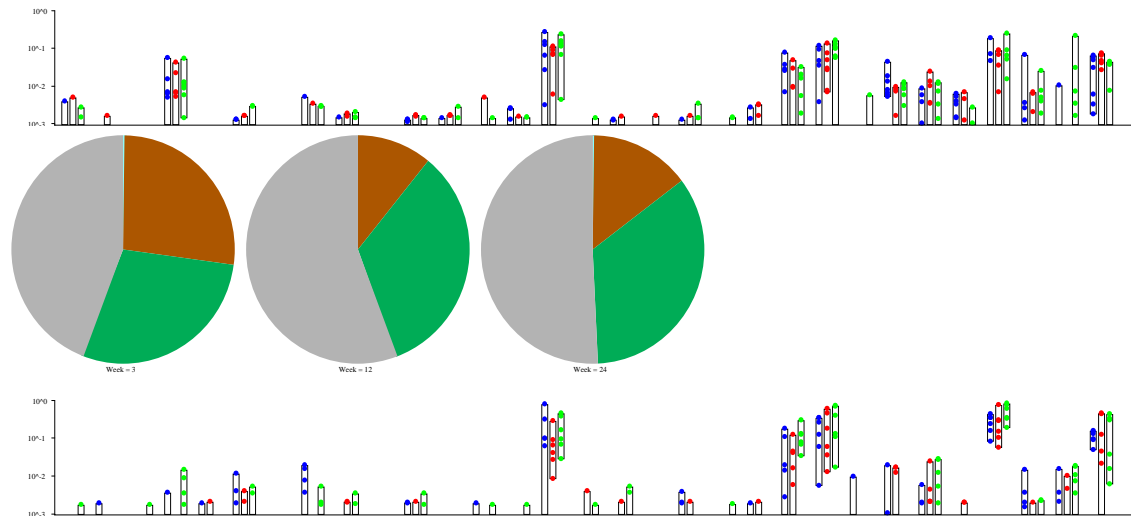


Mapped Epitopes: Flavor of Total CD8+ Functions w/o HAART

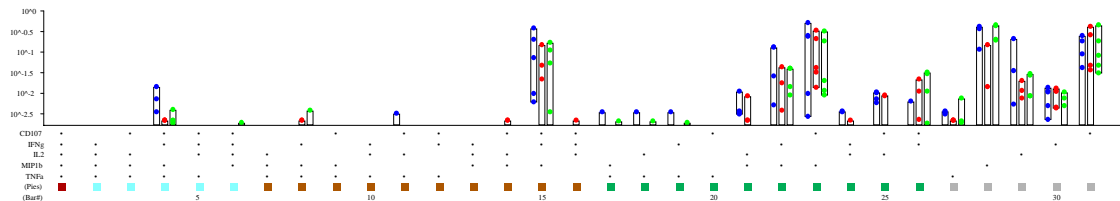
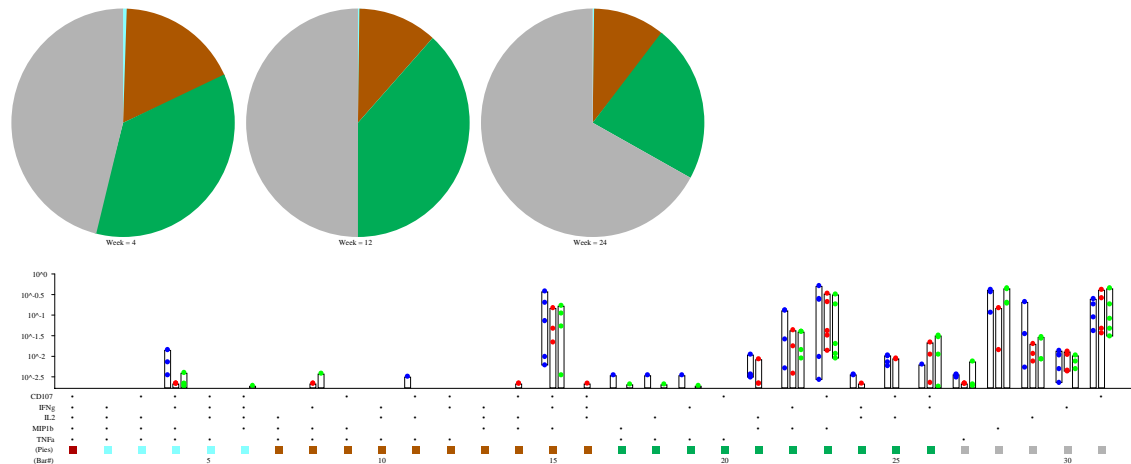
CH40
Non Controller



CH77
Controller

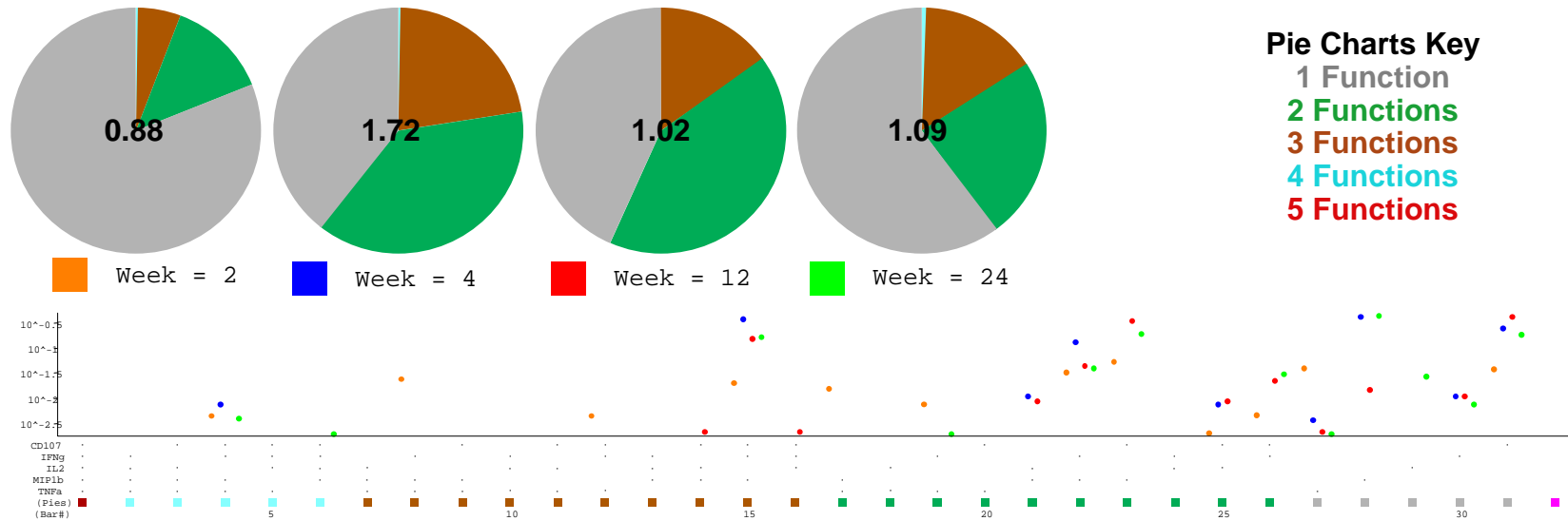


CH58
Controller

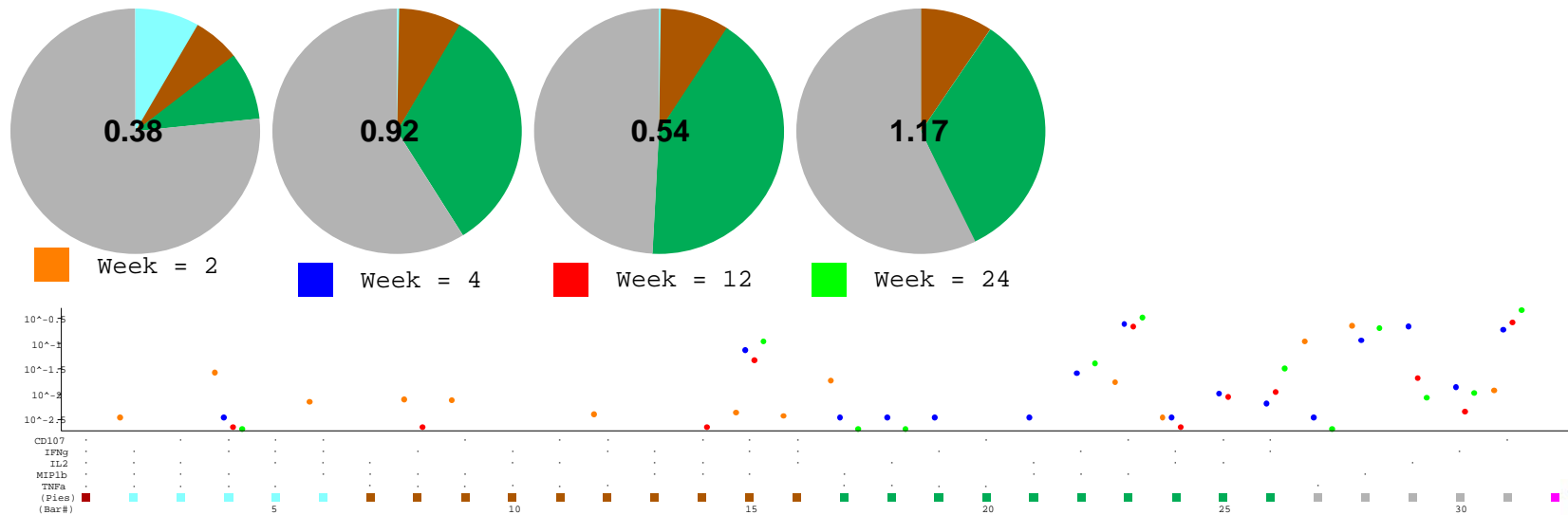


Subject CH58: Longitudinal Responses to Dominant and Subdominant Epitopes

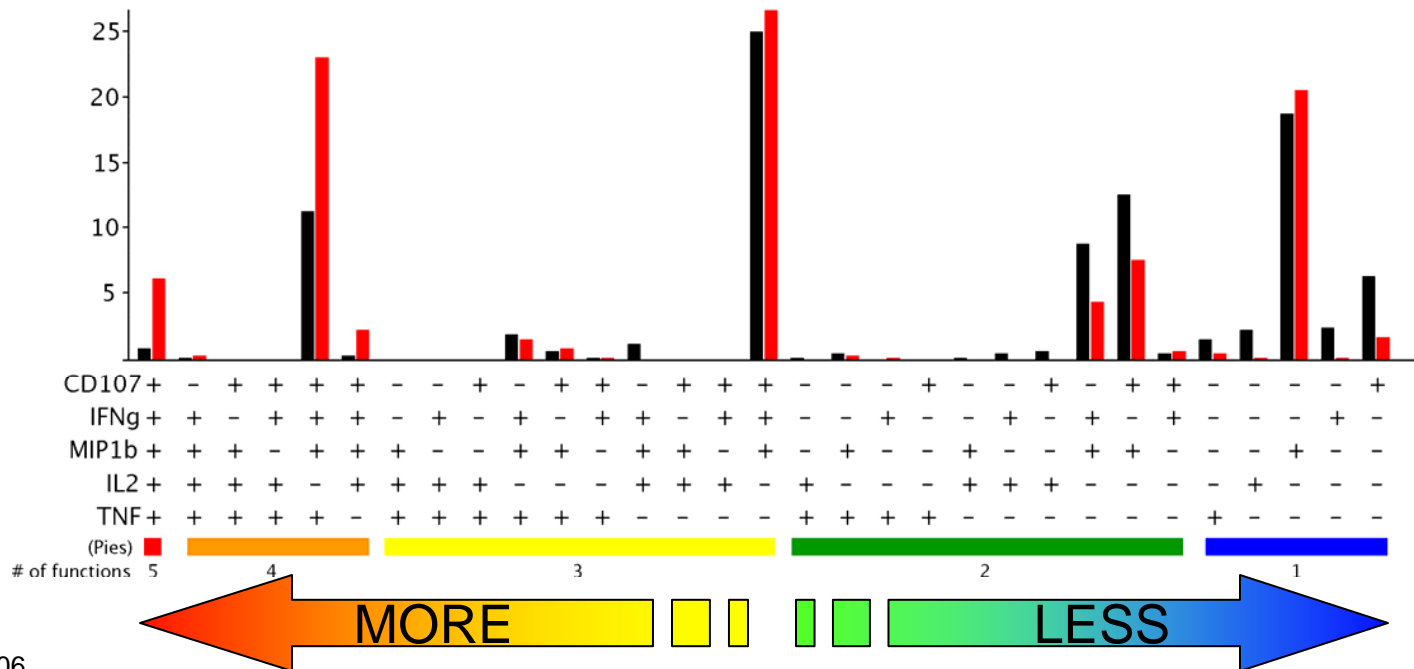
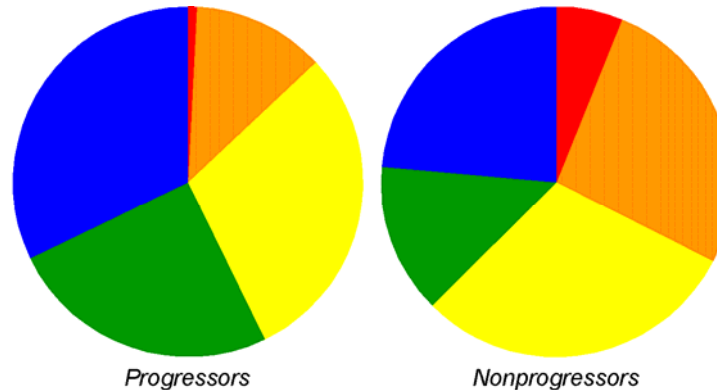
Week 2-24 10058 Epi 3646 Gag: IAGSTSTLQEIQGWMTSN (170 SFC/10⁶ Wk 24)



Week 2-24 10058 Epi 0018 Gag: GQMVHQAI SPRTLNAWVK (75 SFC/10⁶ Wk 24)



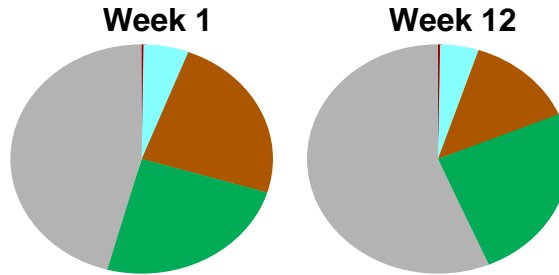
HIV-specific CD8+ T cells in chronic HIV infection



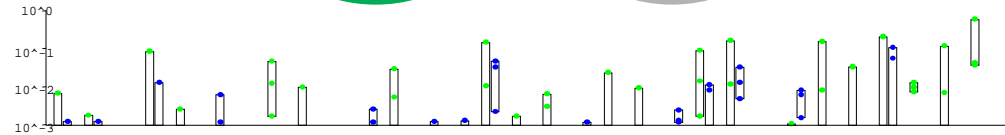
Mapped Epitopes: Flavor of Total CD8+ Functions w/ HAART

CH55

VL 1,670 c/ml @ Week 12

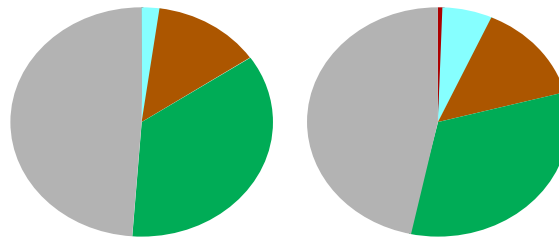


Pie Charts Key
 1 Function
 2 Functions
 3 Functions
 4 Functions
 5 Functions

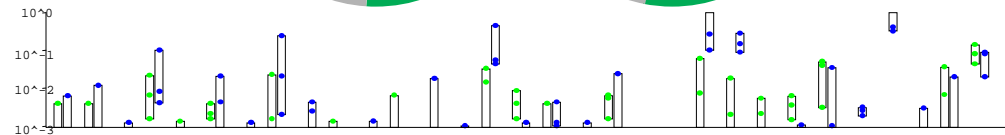


CH27

VL 408 c/ml @ Week 12

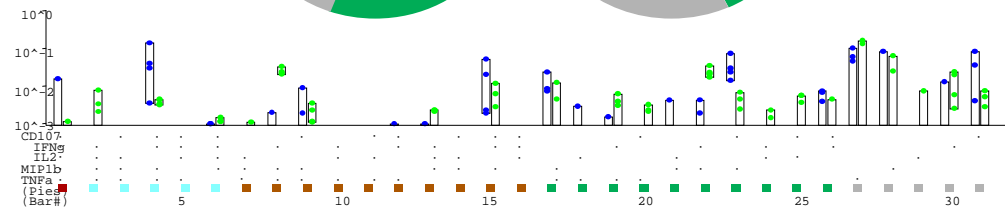
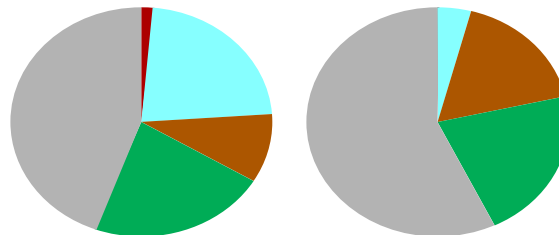


Bar Charts Key
 ■ Week = 1
 ■ Week = 12

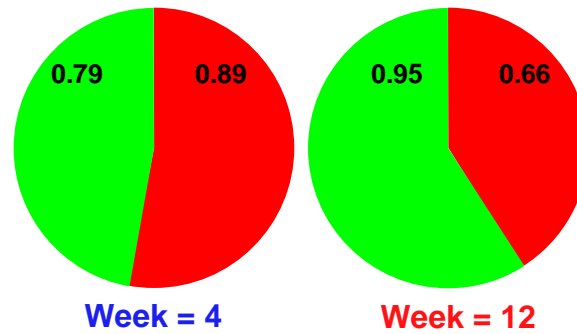
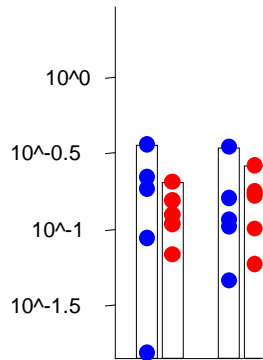


CH06

VL 50 c/ml @ Week 12

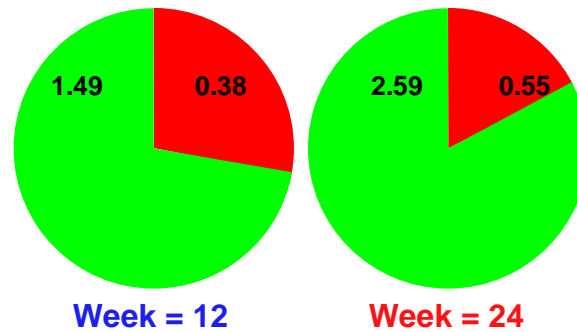
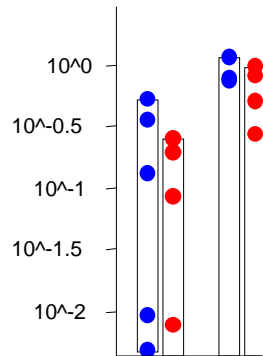


IFN- γ +/- Total CD8⁺ Memory Poly-functional Responses and Virus Load

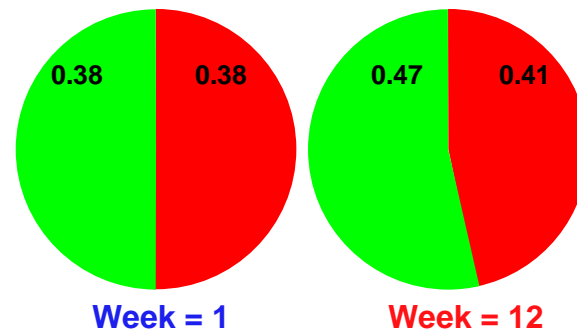
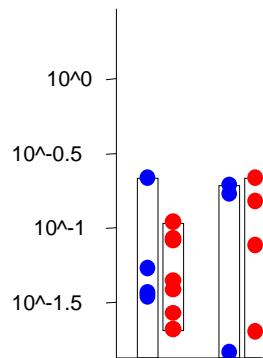


IFN- γ Poly-functional
Pie Charts Key
IFN- γ Pos
IFN- γ Neg

CH40
Non Controller w/o HAART



CH58
Controller w/o HAART

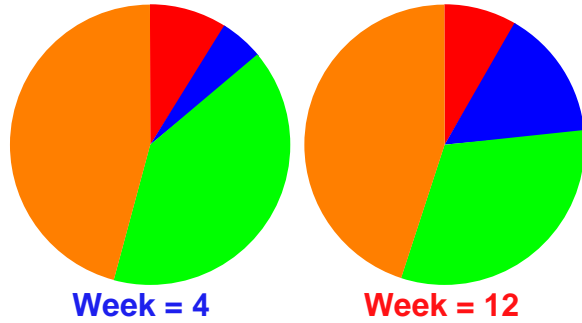
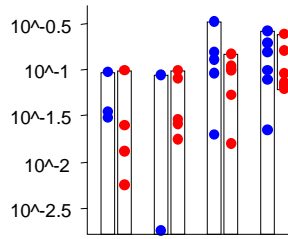


CH06
Controller w HAART

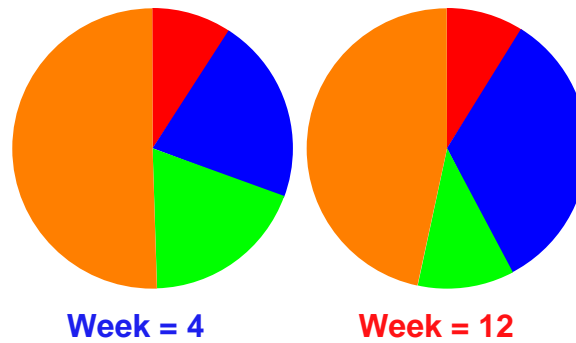
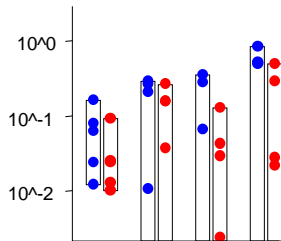
IFN γ ■
Pies ■ ■

IFN- γ +/- Poly-functional Responses in Effector & Memory (CD57+/-) Subsets

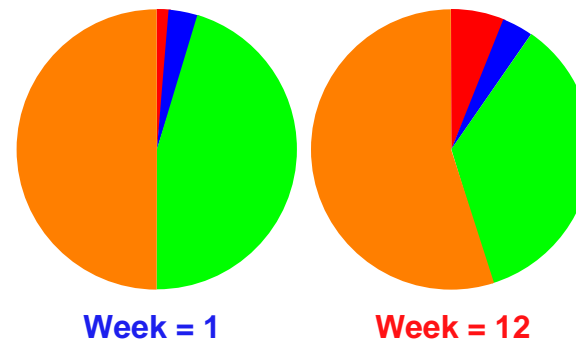
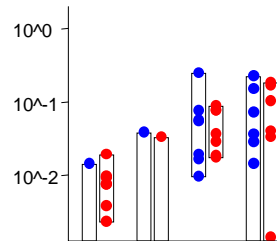
Poly-functional Pie Charts Key
IFN- γ + Effector (Red)
IFN- γ - Effector (Blue)
IFN- γ + Memory (Green)
IFN- γ - Memory (Orange)



CH40
 Non Controller w/o HAART



CH58
 Controller w/o HAART

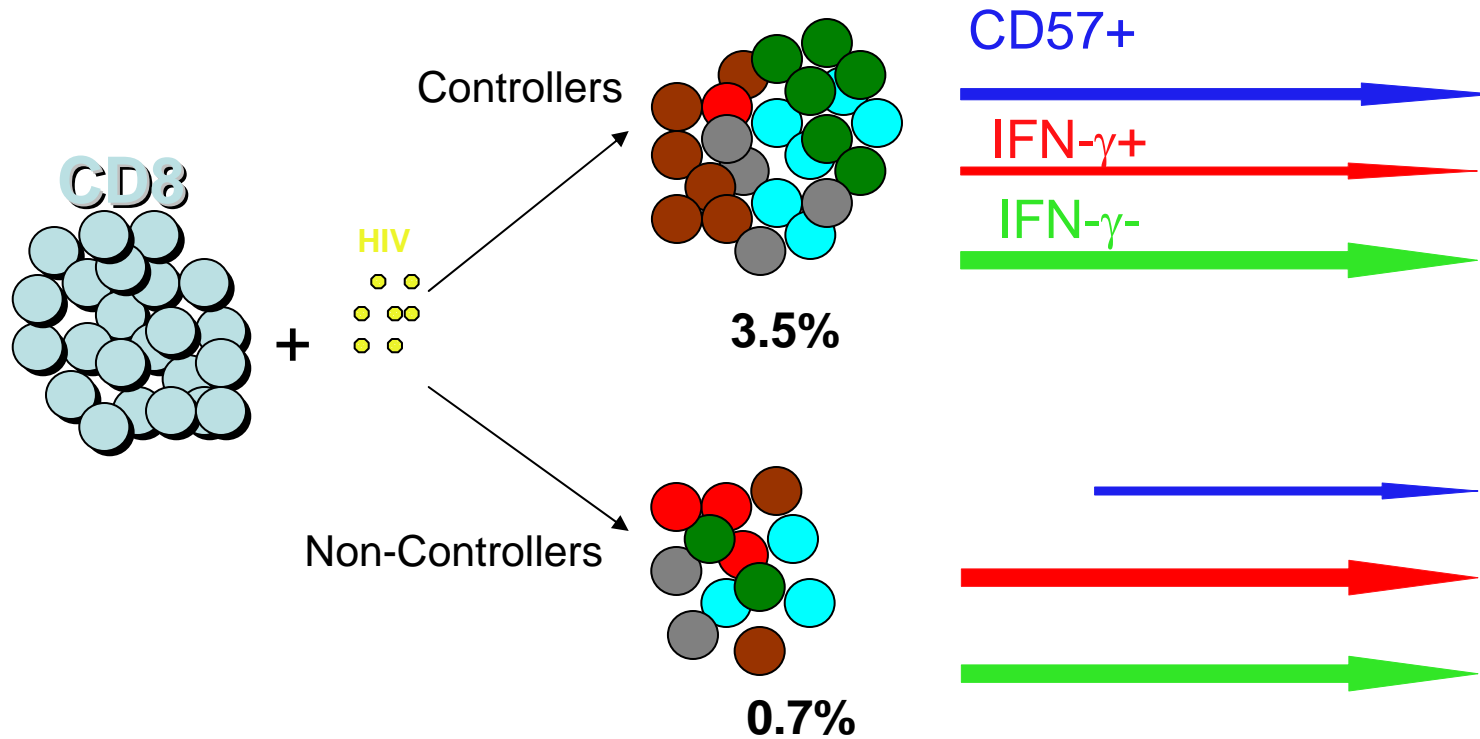


CH06
 Controller w HAART

IFN γ
 57
 Pies ■ ■ ■ ■

Consequences of HIV infection

27+RO+ Memory



1. Lack of highly polyfunctional subsets in controller during acute infection (Low IL-2 and TNF- α subsets).
2. Mechanisms for control related to expansion of Effector subsets during AHI?
3. Could early responses in controllers better select for virus with reduced fitness?

ACKNOWLEDGMENTS: CHAVI 001 T CELL STUDIES

The Patients.

CLINICAL CORE

Core B UNC Duke
Research Team

Mike Cohen (UNC, US)
Marybeth McCauley (FHI, US)
Joe Eron
Charles Hicks (Duke, US)

T CELL CORE

Michael Liu
Nilu Goonetilleke
Stephen Moore
Rachel Tanner
Kati Digleria
Tim Rostron
McM CHAVI LAB
Andrew McMichael (Oxford, UK)

Christine Marking
Kent Weinhold (Duke, US)

Mandla Mlotshwa
Patti Kay
Clive Gray (NICD, S.Africa)

Vaccine Research Center/NIH

Mario Roederer

U. of Pennsylvania

Michael Betts

VIRUS CORE

Bette Korber (LANL, US)

Jesus Salazar
Maria Gonzalez-Salazar
Brandon Keele
Beatrice Hahn
George Shaw (UAB, US)

Jennifer Kirchner
Chunlai Jiang
Feng Gao (Duke, US)

Florette Treurnicht
Carolyn Williamson (UCT, S. Africa)

MANAGEMENT CORE

Kelly Soderberg
Tom Denny
Liz Petzold
Bart Haynes (Duke, US)

CHAVI SUPPORT TEAMS

CHAVI REPOSITORIES
FHI
Duke Management team

SCHARP

Craig Margaret
Cheryl DeBoer
Robert Thomas
Sravani Cheeti
Steve Self (SCHARP, US)



National Institute of Allergy and Infectious Diseases

